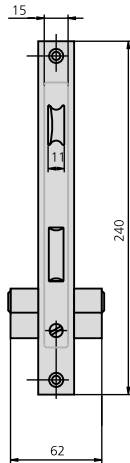


PORTES BATTANTES / PIVOTANTES

PÊNE DORMANT GLISSANT ENTRE-AXES 85 mm.

SÉRIE 184



CARACTÉRISTIQUES

- Têtière de 22mm ou 24mm
- Pêne 1/2 tour réversible de 11 mm
- Boîtier de 15 mm
- Carré de 8 mm.
- 2 cache-cylindre réf. ES1984
- Vis de fixation de cylindre.
- Conforme aux norme UNE-EN 12209:2004

VARIANTES

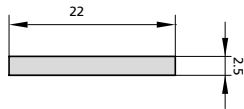
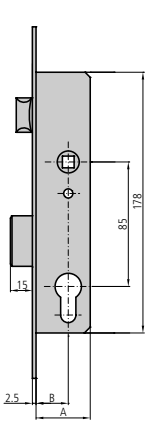
- Fouillot de condamnation rapporté

ACCESSOIRES EN OPTION

- Gamme complète de **gâches**
- Gamme complète de **cylindres**
- Option **gâches électriques**

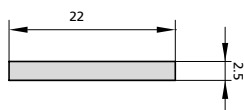
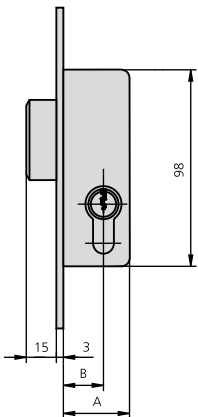
DESCRIPTION	RÉF.	DIMENSIONS		PANNETON	FINITIONS		PIÈCES	
		B	A		TÊTIÈRE	CYLINDRE		

- Pêne demi-tour et pêne dormant
- Cylindre:
 - Panneton court 101C3030/4
 - Panneton long 101L3030/4





184/21/0	18	31	13,25	HN	CN	1	20
184/21/6D	18	31	15	AI	CN	1	20
184/23/0	20	33	13,25	HN	CN	1	20
184/23/6	20	33	13,25	AI	CN	1	20
184/25/0	22	37	15	HN	CN	1	20
184/25/6	22	37	15	AI	CN	1	20
184/28/0	25	38	13,25	HN	CN	1	20
184/28/6	25	38	13,25	AI	CN	1	20
184/30/0	27	42	15	HN	CN	1	20
184/30/6	27	42	15	AI	CN	1	20
184/33/0	30	43	13,25	HN	CN	1	20
184/33/6	30	43	13,25	AI	CN	1	20
184/35/0	32	47	15	HN	CN	1	20
184/35/6	32	47	15	AI	CN	1	20

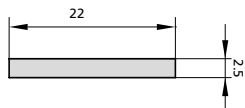
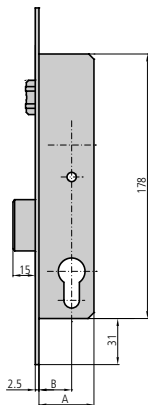
- Pêne uniquement
- Cylindre:
 - Panneton court 101C3030/4
 - Panneton long 101L3030/4



184A21/6	18	31	13,25	AI	CN	1	20
184A21/6D	18	31	15	AI	CN	1	20
184A23/6	20	33	13,25	AI	CN	1	30
184A25/6	22	37	15	AI	CN	1	30
184A28/6	25	38	13,25	AI	CN	1	30
184A30/6	27	42	15	AI	CN	1	30
184A33/6	30	43	13,25	AI	CN	1	30
184A35/6	32	47	15	AI	CN	1	30

DESCRIPTION	RÉF.	DIMENSIONS		PANNETON	FINITIONS		PIÈCES	
		B	A		TÊTIÈRE	CYLINDRE		

- Rouleau réglable et pêne dormant
- Cylindre:
 - Panneton court 101C3030/4
 - Panneton long 101L3030/4



184V23/6	20	33	13,25	Al	CN	1	20
184V25/6	22	37	15	Al	CN	1	20
184V28/6	25	38	13,25	Al	CN	1	20
184V30/6	27	42	15	Al	CN	1	20
184V33/6	30	43	13,25	Al	CN	1	20
184V35/6	32	47	15	Al	CN	1	20