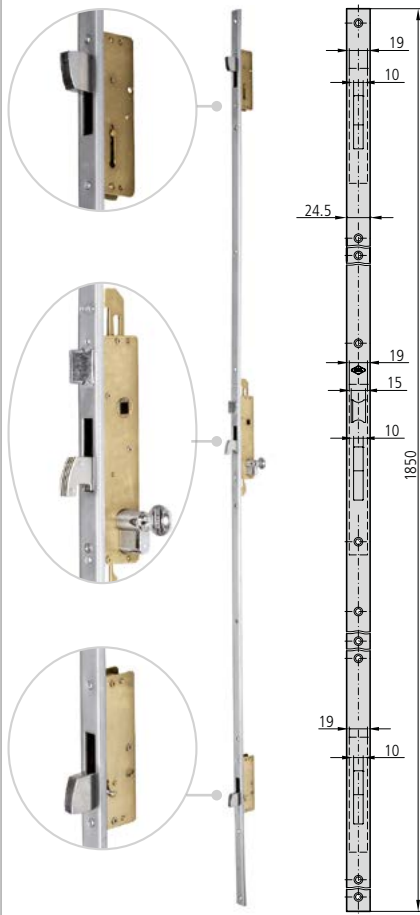


MULTIPONT HOOK DEAD BOLT, 85mm BETWEEN AXES

2994 RANGE

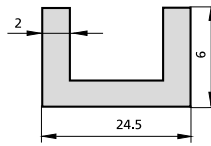


CHARACTERISTIC

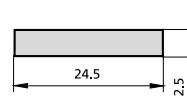
- Stainless steel front plate
- Bichromate treated sides
- Tilting hook dead bolt
- Reversible latch bolt
- 8mm square ruler
- J6-601L security cylindre serie
- Cylinder set screw
- Strike plate for given locks
- Security escutcheon BT194/1N

OPTIONAL ACCESSORIES

- Complete range of cylinders

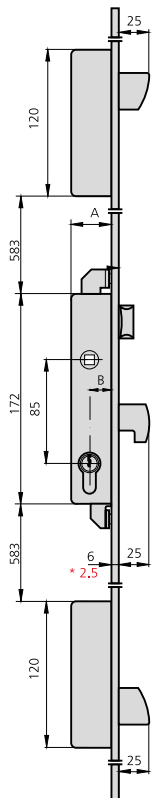


U-SHAPED FRONT PLATE



FLAT FRONT PLATE

DESCRIPTION	REF.	MEASUREMENTS		CAM	FINISH		UNITS
		B	A		FRONT PLATE	CYLINDER	



- U-SHAPED FRONT PLATE**
- Latch bolt and dead bolt
 - Strike plate CE1994/6
 - High/low strike plate CE2994S/6
 - Security escutcheon BT194/1N
 - Cylinder 601L3030/4M

2994/25/6U.J	18	33	15	AI	CN	1
2994/30/6U.J	23	38	15	AI	CN	1
2994/35/6U.J	28	43	15	AI	CN	1

- FLAT FRONT PLATE**
- Latch bolt and dead bolt
 - Strike plate CE1994/6
 - High/low strike plate CE2994S/6
 - Security escutcheon BT194/1N
 - Cylinder 601L3030/4M

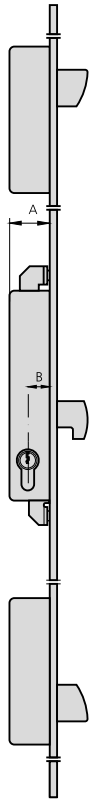
2994/25/6L.J	22	37	15	AI	CN	1
2994/30/6L.J	27	42	15	AI	CN	1
2994/35/6L.J	32	47	15	AI	CN	1

* Flat front plate measurements

MULTIPONT HOOK DEAD BOLT, 85mm BETWEEN AXES

2994 RANGE

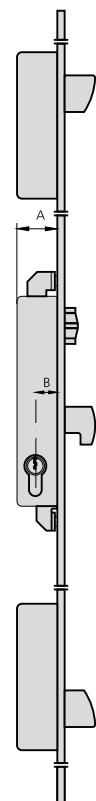
MORTISE LOCKS FOR METAL WORK



DESCRIPTION	REF.	MEASUREMENTS			FINISH		UNITS
		B	A	CAM	FRONT PLATE	CYLINDER	

U-SHAPED FRONT PLATE <ul style="list-style-type: none"> • Dead bolt only • Strike plate CE1994/6 • High/low strike plate CE2994S/6 • Security escutcheon BT194/1N • Cylinder 601L3030/4M 	2994A25/6U.J	18	33	15	AI	CN	1
	2994A30/6U.J	23	38	15	AI	CN	1
	2994A35/6U.J	28	43	15	AI	CN	1

FLAT FRONT PLATE <ul style="list-style-type: none"> • Dead bolt only • Strike plate CE1994/6 • High/low strike plate CE2994S/6 • Security escutcheon BT194/1N • Cylinder 601L3030/4M 	2994A25/6L.J	22	37	15	AI	CN	1
	2994A30/6L.J	27	42	15	AI	CN	1
	2994A35/6L.J	32	47	15	AI	CN	1



U-SHAPED FRONT PLATE <ul style="list-style-type: none"> • Adjustable roller and dead bolt • Strike plate CE1994/6 • High/low strike plate CE2994S/6 • Security escutcheon BT194/1N • Cylinder 601L3030/4M 	2994V25/6U.J	18	33	15	AI	CN	1
	2994V30/6U.J	23	38	15	AI	CN	1
	2994V35/6U.J	28	43	15	AI	CN	1

FLAT FRONT PLATE <ul style="list-style-type: none"> • Adjustable roller and dead bolt • Strike plate CE1994/6 • High/low strike plate CE2994S/6 • Security escutcheon BT194/1N • Cylinder 601L3030/4M 	2994V25/6L.J	22	37	15	AI	CN	1
	2994V30/6L.J	27	42	15	AI	CN	1
	2994V35/6L.J	32	47	15	AI	CN	1
